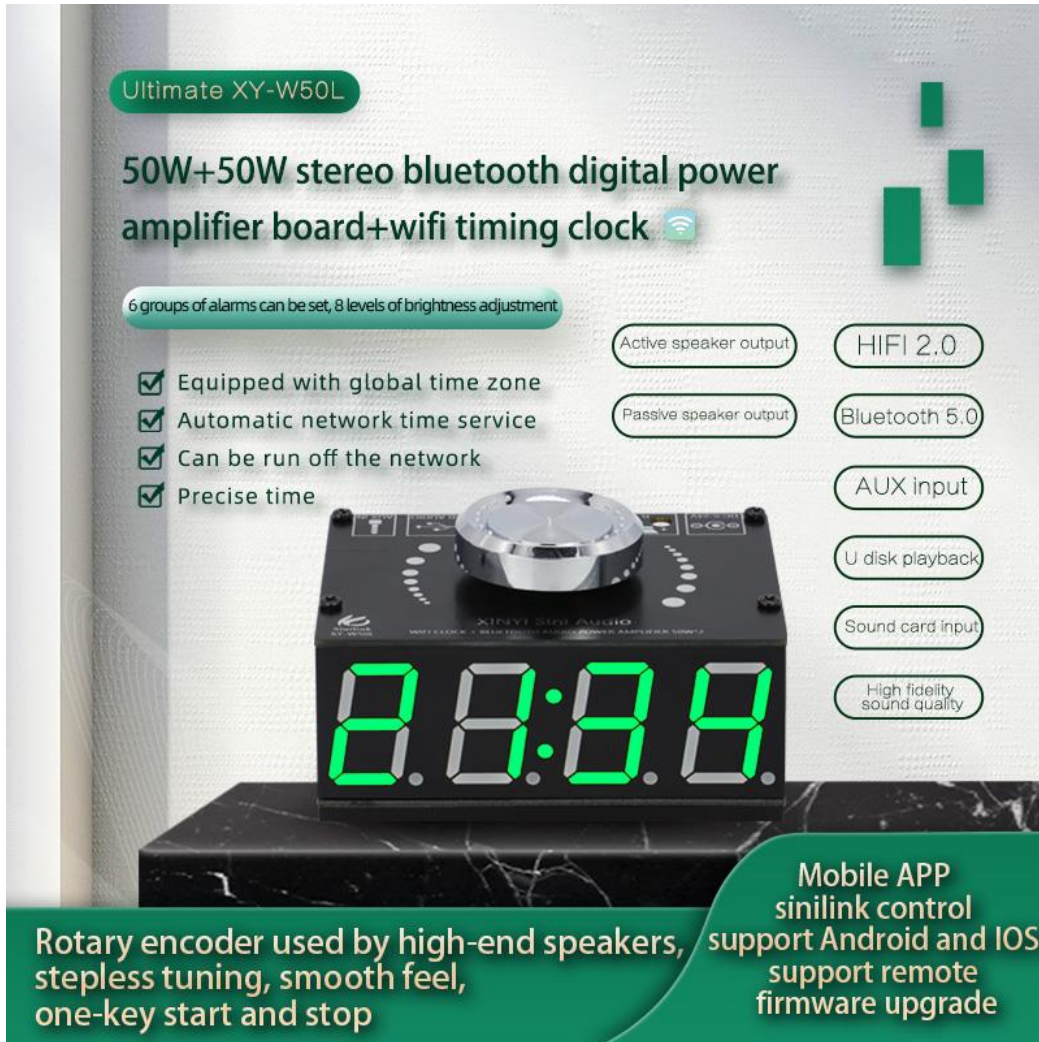


Sinilink XY-W50L HIFI class 50W*2 stereo Bluetooth digital power amplifier module with WIFI timing clock



目录

Sinilink XY-W50L HIFI class 50W*2 stereo Bluetooth digital power amplifier module with WIFI timing clock.....	1
目录.....	1
1.Comparison of W50H and W50L.....	4
2.Multi-function main knob.....	6
3. function Introduction.....	7



4. Clock description and key operation.....	8
5.Nude plate construction	9
6.Installation schematic diagram	10
7.Product shipping list	11
8. product size	12
9.Product parameter table.....	13
10.Notes for product use	13
10.1 Heat sink installation	13
10.2 Audio input mode switch.....	14
10.3 Power supply selection	14
10.4 Hororn selection	14
10.5 Signal problem	15
11.How to connect your mobile phone to Bluetooth	15
12.How to download a mobile APP	16
13. Mobile phone APP control	17
14. The APP controls the Bluetooth connection	18
15.How to distribute the distribution network.....	19
15. Product networking must see the matters needing attention	21

Not shocking, how can I surpass!

**50W+50W stereo bluetooth digital power
amplifier board+wifi timing clock**



1.Comparison of W50H and W50L

W series 50W*2 stereo bluetooth digital power amplifier board + WIFI timing clock selection table		
Model	XY-W50L Ultimate Edition	XY-W50H Extreme Edition
Picture		
Character	Designed by efficient Class-D stereo amplifier, with excellent audio performance, good distortion and anti-pop function, Sound mellow, voice permeability, superior sound	Designed by efficient Class-D stereo amplifier TPA3116D2, with superhigh fidelity (HIFI) and stronger driving ability
clock	WiFi network automatic time service	WiFi network automatic time service
sinilink APP	YES	YES
Power Supply	DC8-24V/2A	DC8-24V/2A
Audio Input	Bluetooth + AUX + U disk + USB soundmax	Bluetooth + AUX + U disk + USB soundmax
Volume control	Rotate 360 degrees by encoder	Rotate 360 degrees by encoder
Audio output	R&L Channels +3.5mm Audio jack	R&L Channels +3.5mm Audio jack
Output power	50W*2	50W*2
Output filter	NO filter	Professional audio LC filter
Protections	overcurrent、short circuit、overtemperature protection and electrostatic protection	over temperature、overvoltage、undervoltage、DC-detect and short circuit protection and electrostatic protection
Thermal solution	Heat sink and shell	Heat sink and shell
Applicable speakers	4-8Ω, 10-100W	4-8Ω, 10-100W
Size	72mm*45mm*31mm	72mm*45mm*31mm
Weight	100g	115g

50W+50W stereo bluetooth digital power amplifier board+wifi timing clock

6 groups of alarms can be set, 8 levels of brightness adjustment

HIFI 2.0 Bluetooth 5.0 AUX input U disk playback
Sound card input High fidelity sound quality
Active speaker output Passive speaker output

Equipped with global time zone

Automatic network time service

Can be run off the network

Precise time



2. Multi-function main knob

Classic look Multi-function main knob

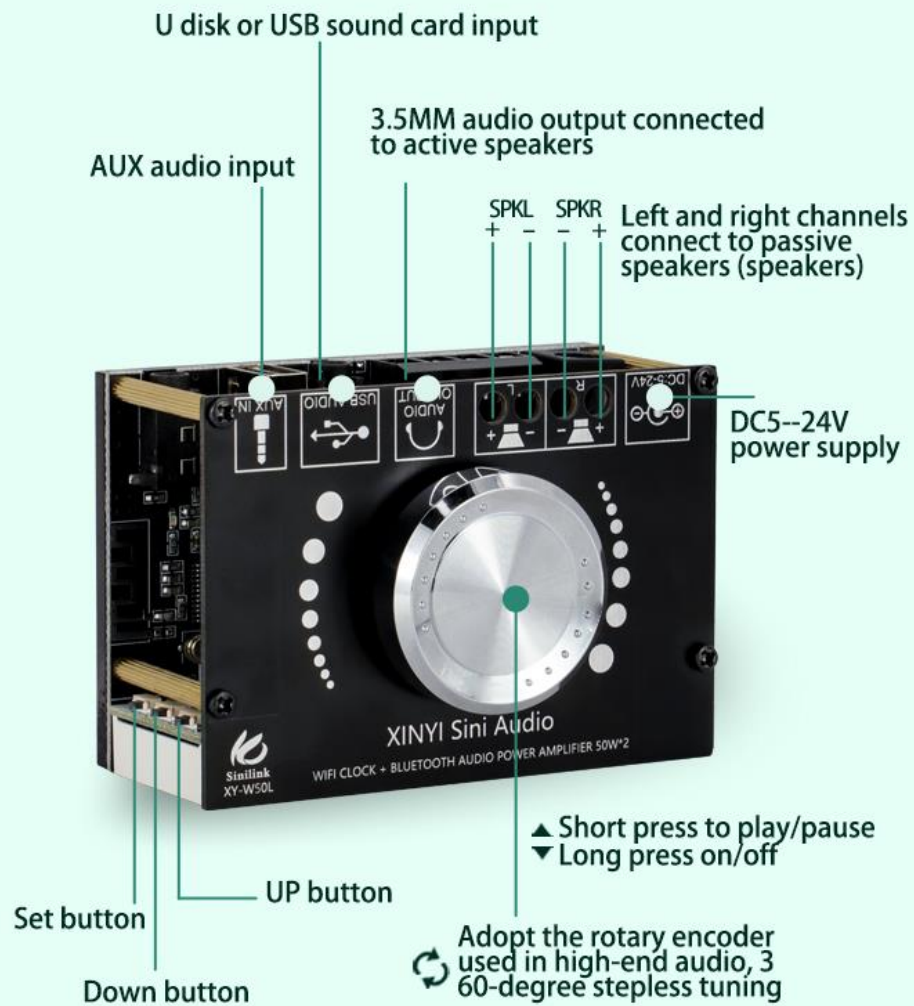
The main knob adopts a rotary encoder that is only used in high-end power amplifiers. Realize 360-degree stepless tuning, smooth feel, one-key start and stop. Long press switch machine operation is simple and convenient.

XY-W50L



3. function Introduction

Introduction to the main functions of the buttons



After the alarm sounds, press any button to turn off the alarm

4. Clock description and key operation

WiFi clock description

1. Mobile APP control Support Android and IOS system Support remote firmware upgrade.
2. After the APP is successfully paired, the time zone is automatically sent to the product, and the current time zone + time format 12/24 hour system can be set.
3. Use 0.8 inch digital tube, time + date + 6 groups of alarm clock + 8 levels of brightness adjustment.
4. Equipped with a global time zone, no matter where you are in any country, it is consistent with the time of your own country. Automatic network time synchronization once every 1 hour. As long as the network is not connected, it will always be synchronized with the time of the country or region. The measured error is generally within 1 second (mainly caused by network delay)
5. It is equipped with a high-precision clock chip and comes with a memory battery, which can guarantee the accuracy of time to the greatest extent when there is no network or no power supply.
6. Automatic screen restoring function, if the automatic rest screen function is turned on, the screen will automatically rest within 10 seconds without any key operation.
7. The set parameters are automatically saved when power off.

Note: The product comes with a high-precision clock chip, if you do not get the product networking, it will not affect the normal use of the product.

Key operation

1.Adjust brightness:

In the operation interface, press the up / down button to adjust the brightness.

2.Set time

In the operation interface, long press the set button for 1 second to enter the time adjustment interface, short press the set button to switch the parameters to be modified (time, month, day, year), short press the up / down button to modify the parameters; after modification, long press the set button for 1 second to exit the time adjustment interface.

3.set clock

In the operation interface, long press the set button for 3 seconds to enter the alarm setting interface, short press the set button to switch the parameters to be modified, and short press the up / down button to modify the parameters; after modification, long press the set button for 1 second to exit the time adjustment interface;

Alarm parameter description: a1.on / / a1.of A1; alarm number 1-6, a total of 6. On / of; alarm status, on alarm on; of alarm off.

4.Turn sleep mode on / off

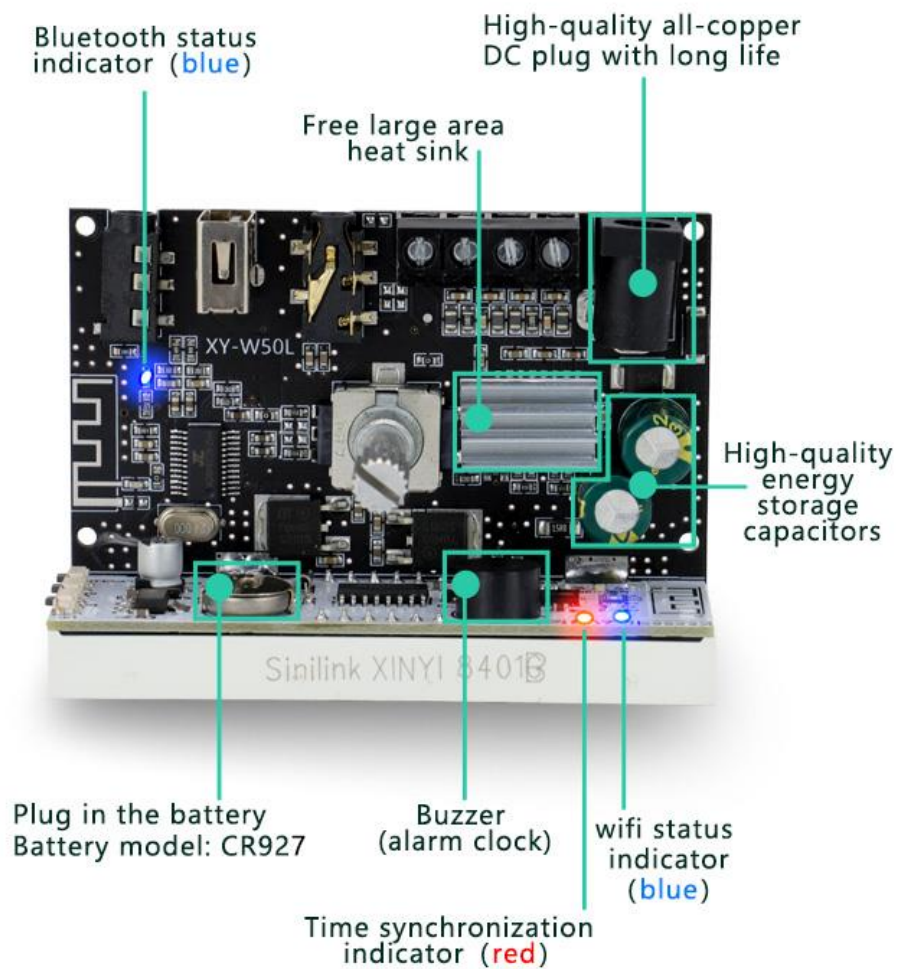
In the operation interface, long press the up button for more than 1 second to turn on / off the sleep mode; LP: on to start the sleep mode (no key operation within 10 seconds, automatic screen rest; operation of any key to wake up)

5.Turn on / off rotating display (month, day and time display in turn)

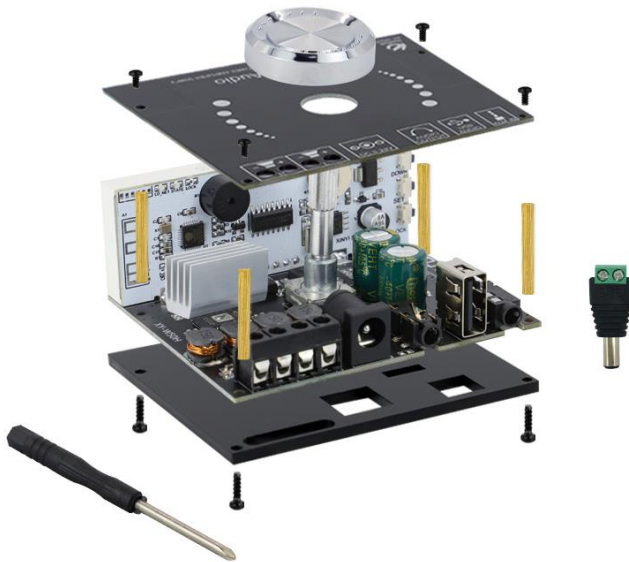
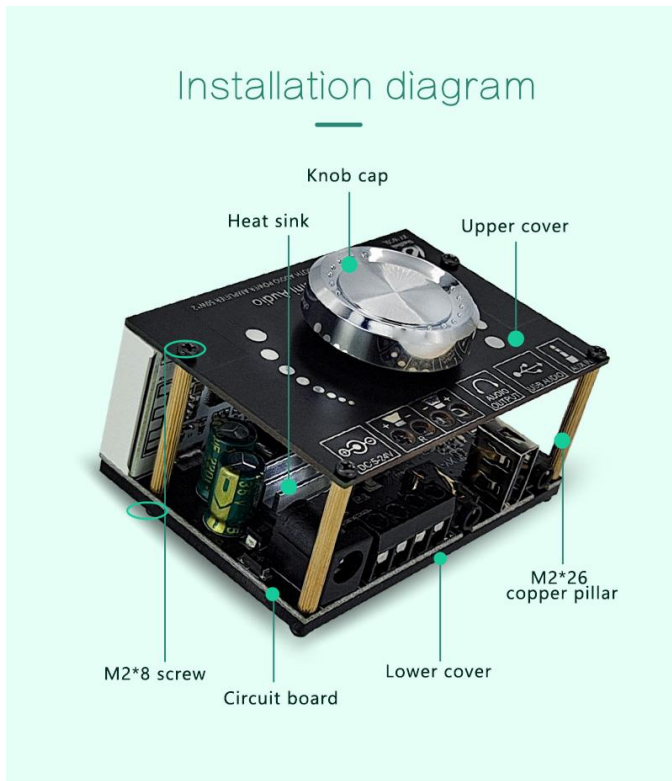
Press the down button for more than one second in the running interface to turn on / off the display in turn.

5.Nude plate construction

Bare board structure display diagram



6. Installation schematic diagram



7.Product shipping list

Product list display diagram



Free screwdriver+DC adapter Product + Packaging Weight: 93g



Upper cover



Product bare board



Lower cover



4 M2*26 copper pillars



1 knob cap



4 M2*3 screws

4 M2*8 screws



Heat sink

8. product size

Product size description



9.Product parameter table

Product parameter information table

Brand: XINYI Sini Audio Product Model: XY-W50L
Product name: 50W+50W Bluetooth power amplifier board+WIFI clock
Power supply: DC5-24V/2A or more
Clock function: WIFI time service Bluetooth version: 5.0
Audio input: Bluetooth+AUX+U disk+USB sound card
Audio output: Passive speaker+ 3.5mm interface stereo output
Volume adjustment: high-end encoder knob adjustment, smooth feel
Output power: 50W*2 Adapted speakers: 10W-100W /4Ω-8Ω
Protection mechanism: static electricity, overcurrent, short circuit, overheating protection
Unique function: support Sinilink-APP control
Product size: 72mm*45mm*31mm Product weight: 100g
Note: power supply below 9V, the output power is very small, it is recommended to use a power supply above 9V Promote 4 ohm speakers, power supply 12V and below Promote 8 ohm speakers, power supply 24V and below

10.Notes for product use

10.1 Heat sink installation

When assembly, we must pay attention to the installation of radiator. The metal shell of radiator must not be in contact with the surrounding components to avoid short circuit.

10.2 Audio input mode switch

without mounting any audio or external devices; if the external playback device is plugged in AUX or U disk, the power default is AUX or U disk playback mode; follow the backplug device priority principle during playback, e. g

inserting AUX, during Bluetooth playback switches to AUX playback immediately; if U disk is inserted, switch to U disk playback immediately

Switching audio mode is also available with APP selection switch, very convenient.

Try to choose AUX lines with shielding to reduce noise.

U disk playback to use MP3 format as possible, WAV format sampling rate must be within 44100Hz, too high sampling rate may lead to not playback.

When using the USB sound card function, you can connect the computer with the USB data cable without installing any drive. Most computer systems will switch the USB sound card by default. If you cannot switch automatically, you can manually choose to switch.

10.3 Power supply selection

The power supply range of 5-26VDC, is compatible with standard 5.5-2.1/2.5 power adapter plug, recommended 12V/24V standard power adapter with current output above 2A.

Select the power size is related to the horn power used, such as using 8 ohms 50W horn, using 24V power supply, current at least 4A, too low current may appear sound lag phenomenon, reduce the output power can solve this problem; using 4 ohms horn, the power supply control within 20V, too high voltage may make the power discharge fever serious.

Below 9V power supply works, but the output power is extremely small, so the supply voltage is above 9V, and 12V/24V standard power supply is recommended.

The supply voltage must not be higher than 26V, and higher than 26V, circuit board is burned.

If the volume is increased during the playback process, the power amplifier board is restarted, which is caused by insufficient power supply, and you can replace the power supply with a larger output current.

10.4 Horn selection

This product power amplifier can continuously output 50W*2 of power, 10W~100W horn can be promoted, using 8 ohms or 4 ohm horn is recommended. If the power is within 50W, appropriately reduce the supply voltage (such as 12V power) or reduce the playback volume; the greater the horn supply voltage greater than 50W, the better (within 26V).

If the music horn appears "hiccup" phenomenon, the first consider the lack of power supply, a larger power supply to use power supply; the second consider the power spare heat protection, strengthen heat dissipation or reduce the playback volume.

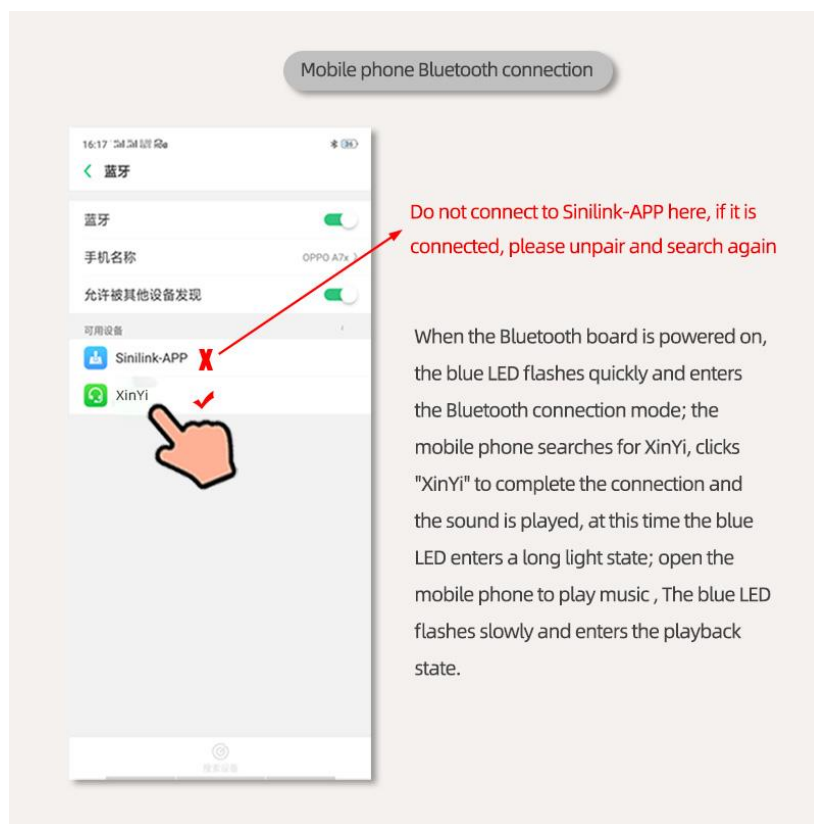
If multiple horns are used in parallel, be sure that the total impedance after the horn in parallel is controlled above 4 ohms, too small impedance, the power amplifier is easy to enter the overcurrent protection state.

10.5 Signal problem

This product uses a PCB antenna with the visible distance of 15 m without shielding. If you do not find Bluetooth, or connect to Bluetooth, it is a signal problem.

- 1) Stay away from the router when used.
- 2) Avoid use on metal tops, which will affect the PCB antenna signal.
- 3) Modify the speaker, if it is a metal shell, be sure to lead the antenna from the shell, the metal will shield the signal.

11.How to connect your mobile phone to Bluetooth



Make sure that Bluetooth enters Bluetooth connection mode- - -blue LED flash, AUX do not insert, can not enter Bluetooth connection state after insertion

Search for Bluetooth on the mobile phone, found "complete the connection after XINYI", click, accompanied with the prompt sound. After the successful connection, the LED enters the long beam state, open the mobile phone music software to play music, blue LED flash, enter the playing state;

When the phone searches for Bluetooth, come out. "Sinilink-APP", don't connect this Bluetooth

here, this is connected inside the APP. If connected, please cancel the pairing and search again, otherwise it will cause you unable to connect inside the phone APP.

12.How to download a mobile APP



Scan the code to download APP, foreign customers please download in Google Market,hunt for 'sinilink' download.

13. Mobile phone APP control

Give away cool features

Mobile APP control

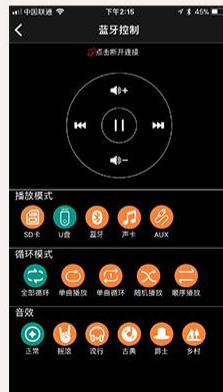
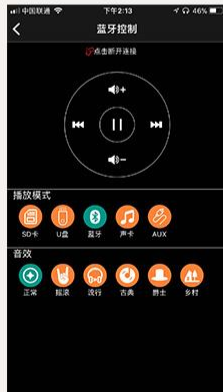
Support Android and IOS



APP control

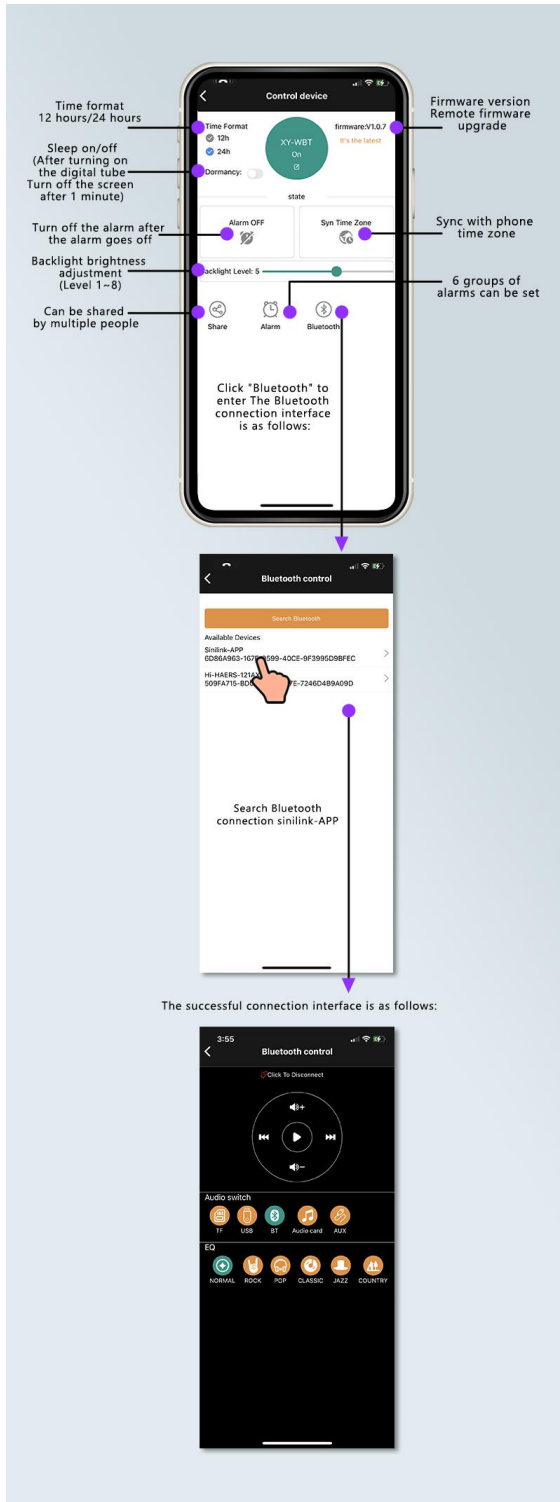
APP visual operation play mode

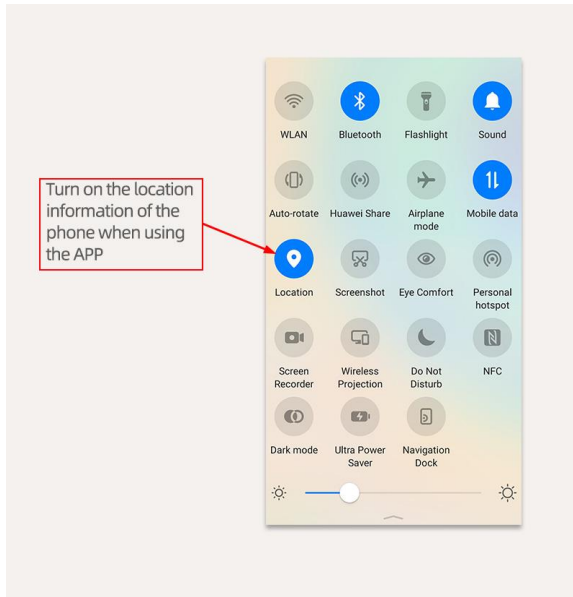
Volume Sound Effect Up and Down Song Control Play Pause Play Mode



More functions will be upgraded in the future, so stay tuned!

14. The APP controls the Bluetooth connection





15.How to distribute the distribution network

In the operation interface, press SET button for more than 5 seconds to enter Touch pairing state, and press SET button again for 5 seconds to enter AP pairing state.

Touch mode: Blue light interval 1 second flash 4 under AP mode: Blue lamp continues to flash quickly

Enter the Touch pairing mode by default. If the pairing fails, please select the AP mode, connect the WIFI network with a "Sinilink Product", password of "12345678" and operate according to the APP prompt.

Product networking steps

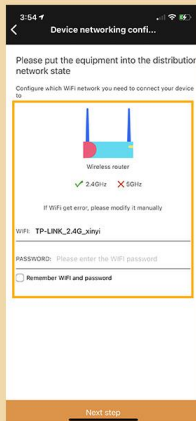
First step



Second step

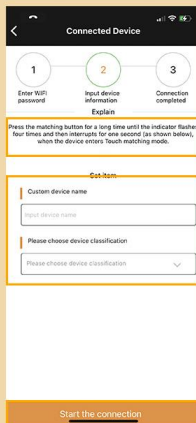


Third step



During the pairing process, the WIFI network must be 2.4G, and the 5G network cannot be paired. (If your WIFI router 2.4G and 5G are network merged, please reconfigure the router, separate it, and select 2.4G network.)

Fourth step



The product enters Touch by default after power-on Pairing mode.

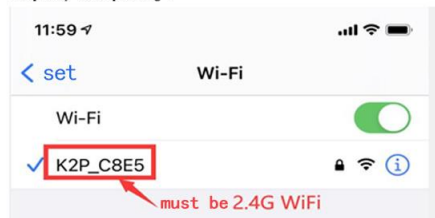
Customize device name and classification.

Click "Start Connection".

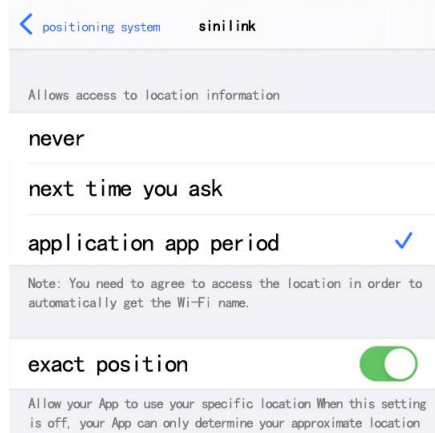
15. Product networking must see the matters needing attention

Product connection network matters needing attention

1. Make sure the phone is connected to a **personal WiFi network**, must be **2.4Ghz frequency band**, 5Ghz frequency band Can't match, If your router is 2.4Ghz frequency band and 5Ghz frequency band amalgamative, Reconfigure the router, separate it, choose 2.4G frequency band pairing .

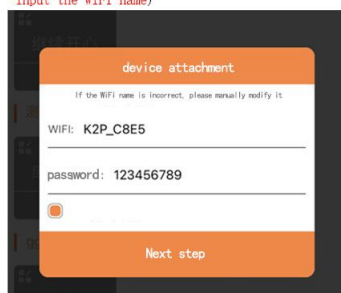


2. Make sure "Xinyilian" APP **Location permission already on** .



3. Let the product enter the pairing state, **the blue light flashes 4 times every second**(Touch Pair mode), If Touch Matching failure, Please select AP mode for pairing and operate according to the APP prompts.

4. Add device interface need to confirm whether the App has **successfully obtained the WiFi name**, **And make sure the WiFi password you enter is correct**. (If the WIF name fails to get, please r-
echeck whether the location permission of the APP is turned on
If the permission is already turned on, you can try to manually
-input the WiFi name)



5. Keep your phone and device as close to your router as possible.